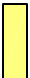

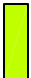
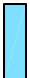



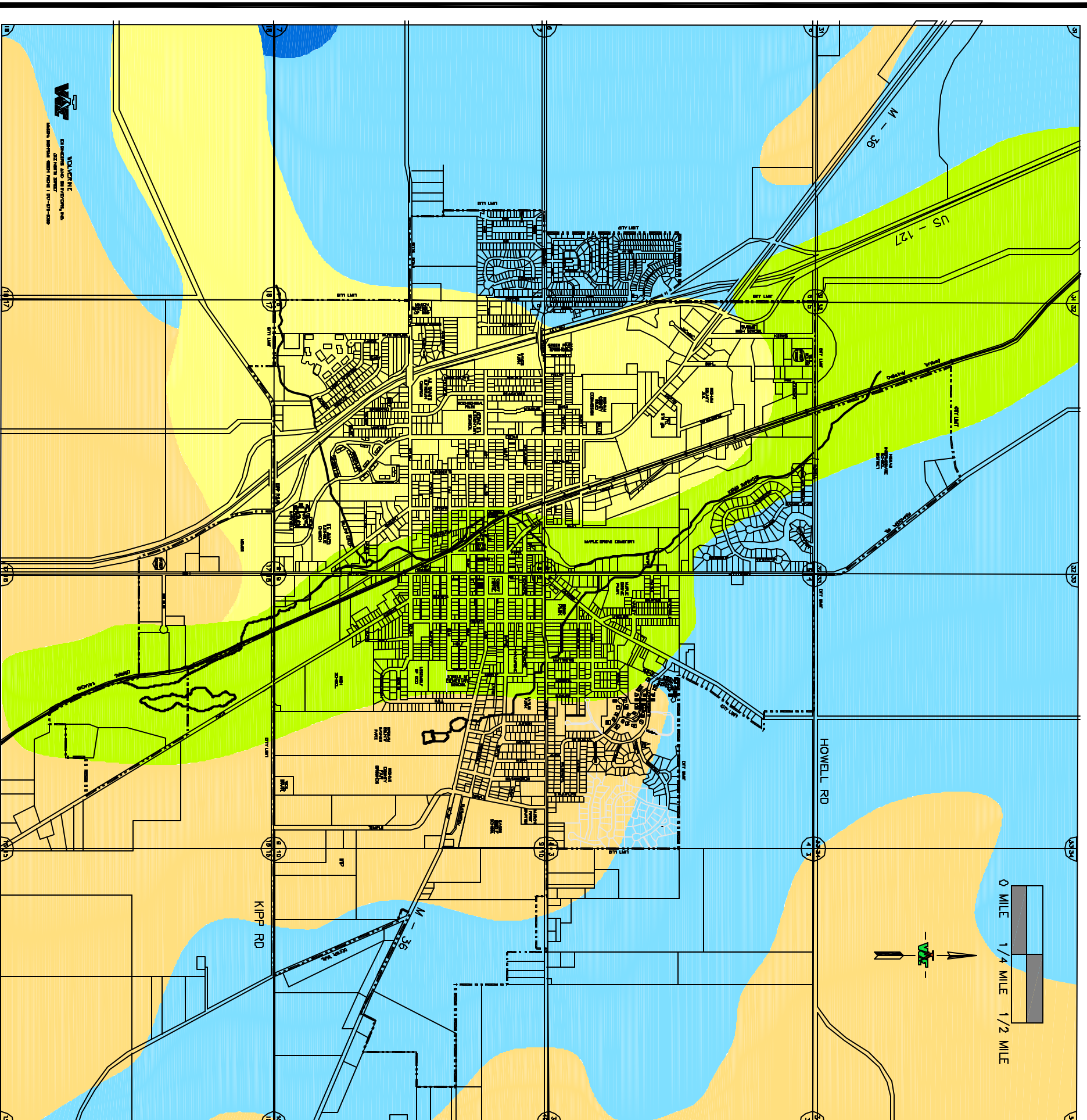
# Mason Soils Inventory

No Scale

## Legend

### U.S. DEPARTMENT OF AGRICULTURE, SOIL CONSERVATION SERVICE

-  Mariette-Capac-Owosso association: Nearly level to rolling, well drained to somewhat poorly drained loamy soils.
-  Houghton-Palms-Edwards association: Nearly level, very poorly drained muck soils.
-  Osherno-Houghton-Riddles association: Nearly level to hilly, well drained and poorly drained, sandy, loamy, and muck soils.
-  Capac-Mariette-Colwood association: Nearly level and undulating, well drained to poorly drained loamy soils.
-  Mariette-Osherno-Capac association: Nearly level to steep, well drained to somewhat poorly drained loamy and sandy soils.



Draft