

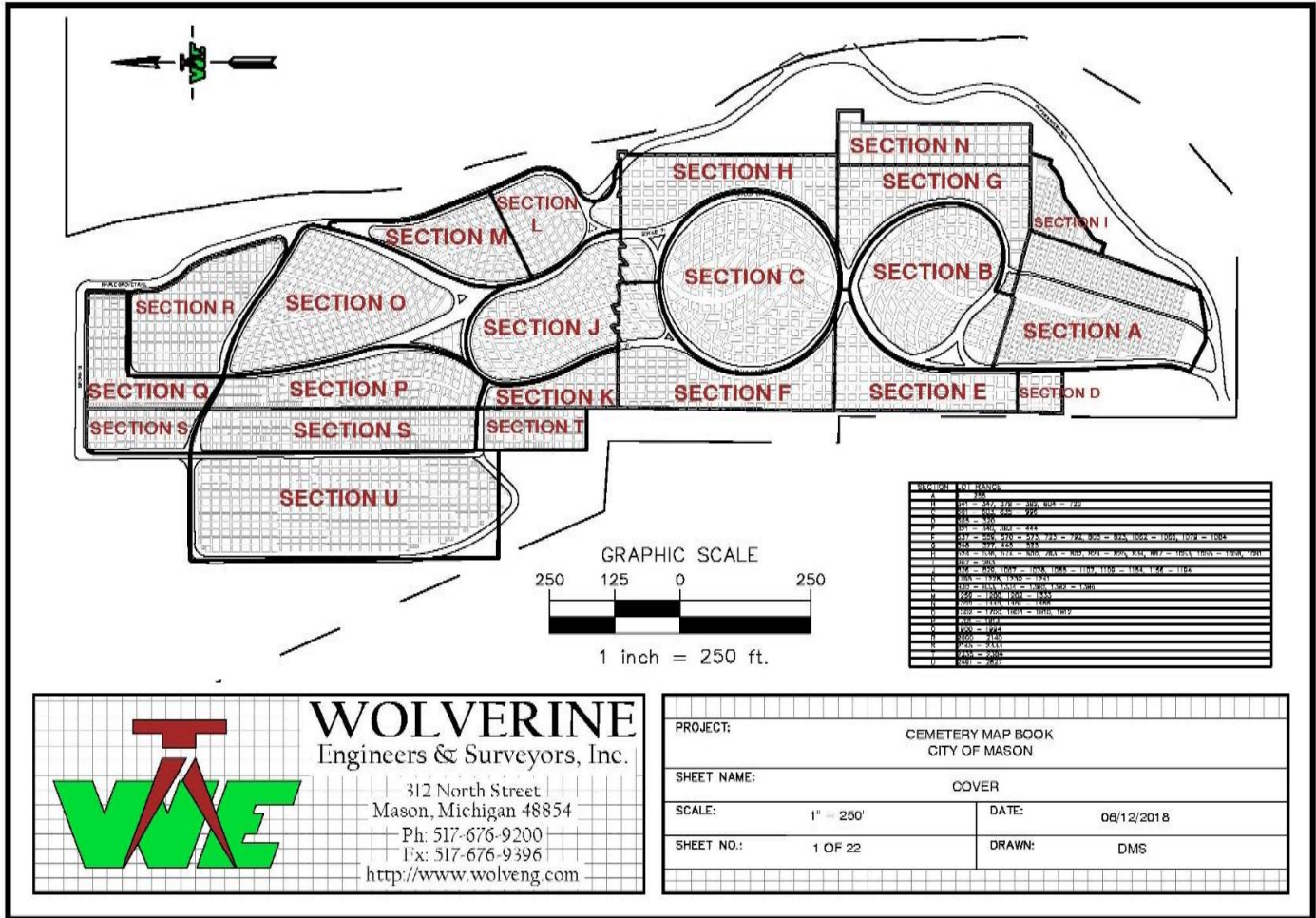


# MAPLE GROVE CEMETERY

**Regulations Amended** – November 23, 2015

**Fees Amended** – October 6, 2014

# Cemetery Map



Refer to interactive map on website for more detailed information on each section.

# Rules and Regulations

---

## Burials

- All burials shall be in metal or concrete vaults, or concrete rough boxes, except for cremations and infant burials in casket size of two feet six inches (2.6") or less.
- No elevated mounds shall be built over graves, and no lot shall be filled above the grade established by the Cemetery Director.
- The Sexton must write the section number, section letter, and space number of the lot at the bottom of the burial certificate. The same information must be written on cremation interments, with the addition of cremation burial location on the space by direction (North-South-East-West).

## Burial Arrangements

At least eight (8) regular working hours (Monday through Friday, 8 a.m. to 5 p.m.) notice must be given to the City whenever an interment is to be made, and all interments must be made by the Cemetery Director or his/her assistants, or under his/her supervision. No person will be permitted to dig a grave or open any grave already there without first obtaining a permit to do so. No Sunday burials.

## Cemetery Grounds and Plantings

- The City shall establish the grade of all lots and lawn. The Cemetery Board of Trustees and the City Administrator shall direct all improvements to be made in Maple Grove Cemetery, before as well as after, interments have been made therein. The City reserves the right to remove any tree, plant, shrub, or any other object that violates Cemetery Rules and Regulations.
- All persons are prohibited from picking any flowers or breaking or injuring any tree, plant, or shrub on the Cemetery grounds.

## Flowers and Decorations

- Hanging baskets, wire baskets, glass covered or wood boxes, chairs, benches, settees and fencing are classified as undesirable ornaments in the Cemetery and are prohibited.
- All persons are prohibited from picking any flowers or breaking or injuring any tree, plant, or shrub on the Cemetery grounds.
- The City reserves the right to remove funeral designs and floral pieces as soon as they become unsightly.
- Winter decorations, artificial flowers, figurines and decorations (not to exceed 18 inches in height) may be maintained on graves from November 1 to April 1. If such decorations are not removed by April 1, they shall be considered abandoned and may be disposed of.
- No sod may be removed from any Cemetery lot except within eighteen inches (18") of a marker or monument on the interment side for planting flowers. All rose bushes containing thorns are prohibited.
- Any urn that has not been used for five (5) consecutive years may be removed from the Cemetery.
- No shrubs or trees shall be planted until prior approval has been given by the City. Plantings will only be permitted at the ends of the monuments. No shrubs or trees will be permitted which will exceed five feet (5') at maturity.

## Hours

- Visitors will be admitted every day from sunrise to sunset.
- The City is authorized to remove all those who violate these rules or commit trespass.

## Markers, Monuments, and Foundations

- All markers and monuments shall be installed under the supervision of the City. All foundations shall be placed by Maple Grove Cemetery employees except those markers which the American Legion Browne/Cavender Post #148 installs as part of the "Row of Flags". All marble markers and monuments are prohibited. All military markers four inches (4") or less thick shall be installed flush with the ground unless used as a double marker on a granite base. Lot corner markers may be used if level with the ground.
- The following material in any form will not be permitted: sandstone, slate, artificial stone, field stone, terra cotta, wood, iron, glass, unconsolidated material (i.e. wood chips, stone etc.), and all kinds of landscape edging.

## Pets

All dogs and other domestic animals are prohibited from running at large on the grounds, and the owners of same will be held responsible for any damage done.

## Vehicles

Any person driving a vehicle in the Maple Grove Cemetery shall be responsible for any damage done to the Cemetery, including its privately-owned contents, by said vehicle. No person shall drive a vehicle in excess of 15 miles per hour on any Cemetery road, or drive off the established roads unless permission is given by the City.

# Fees

## Purchase of Burial Spaces

Burial spaces may be purchased by contacting the City of Mason. Spaces are sold in the following ways:

- Lot- five spaces
- Half-Lot – two spaces
- Single Space – one space
- Baby Space – this space is equivalent to half of a single space

PURCHASE		
SPACE	RESIDENT	NON-RESIDENT
Full Lot	\$2,585	\$4,585
Half Lot	\$1,295	\$2,295
Single Space	\$700	\$1,200
Baby Grave	\$265	\$465

GRAVE OPENING/CLOSING		
WEEKDAY		
Adult	Cremation	Baby
\$575	\$135	\$135
SATURDAY		
Adult	Cremation	Baby
\$700	\$200	\$200

<b>DISINTERMENT:</b>	250% of grave opening charge
<b>FOUNDATION:</b>	\$.50 per square inch (Minimum Cost - \$125.00)
<b>OVERTIME CHARGE:</b>	\$150 extra for any funeral entering the Cemetery after 3:30 p.m.

# Other Information

---

## Monument Foundations

Foundation orders may be placed at any time during the year by contacting the City. The City pours foundations twice a year, in the spring and in the fall.

## Burials Arrangements

Arranging a burial is most often conducted between a funeral director and the City. When a family determines to bury their loved one's remains, they may also work directly with the City.

## Spring Clean-up

Every year on April 1, the staff begin spring cleaning in the cemetery. Winter decorations are removed from the grounds in Maple Grove Cemetery, as well as sticks and leaves to prepare for the mowing season. By Memorial Day, flags are placed on the resting places of veterans and many sites have fresh plantings planted by loved ones.

## Winter Decorations

Items collected from sites that appear to be reusable are placed behind the cemetery garage for a brief time to provide an opportunity for the owner to reclaim desired items.

**Resources:** More questions? Please contact our Customer Service Desk at 517.676.9155

Revised: 5.24.2018 (Clerk)